

직원식당(312석)

2간막이 (BYLD)

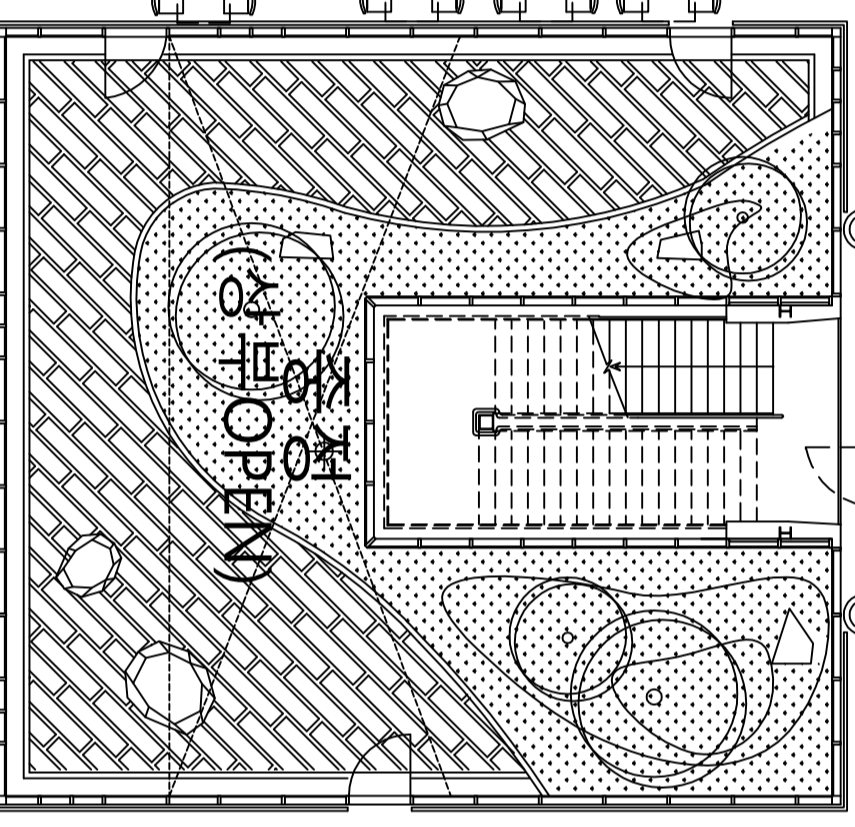
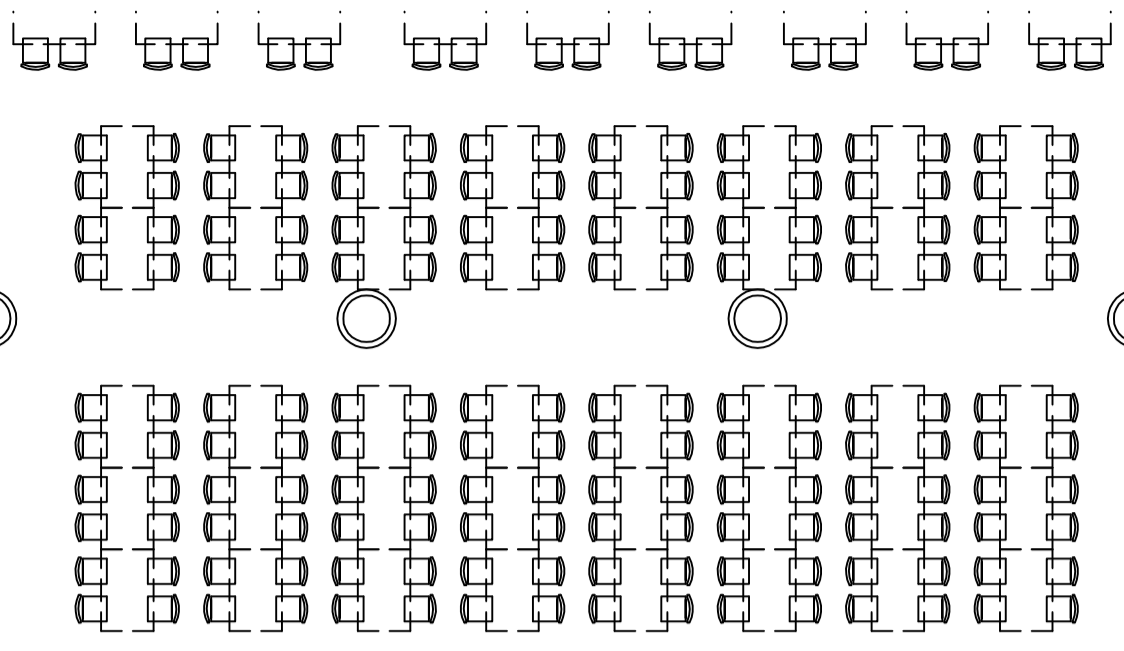
퇴식

음수

통로

공용계단#1

계단실#5



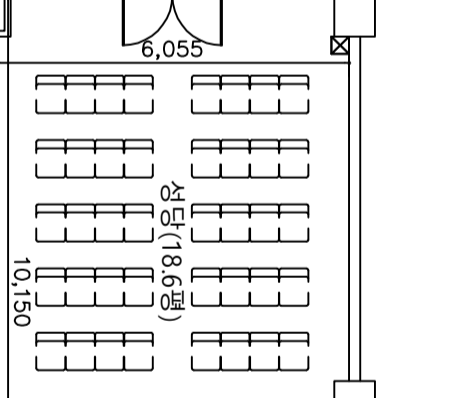
복도#2

편의시설 #2

EPS #4
TPSPS/AD #4
#12

주액 창고

RO실 -1



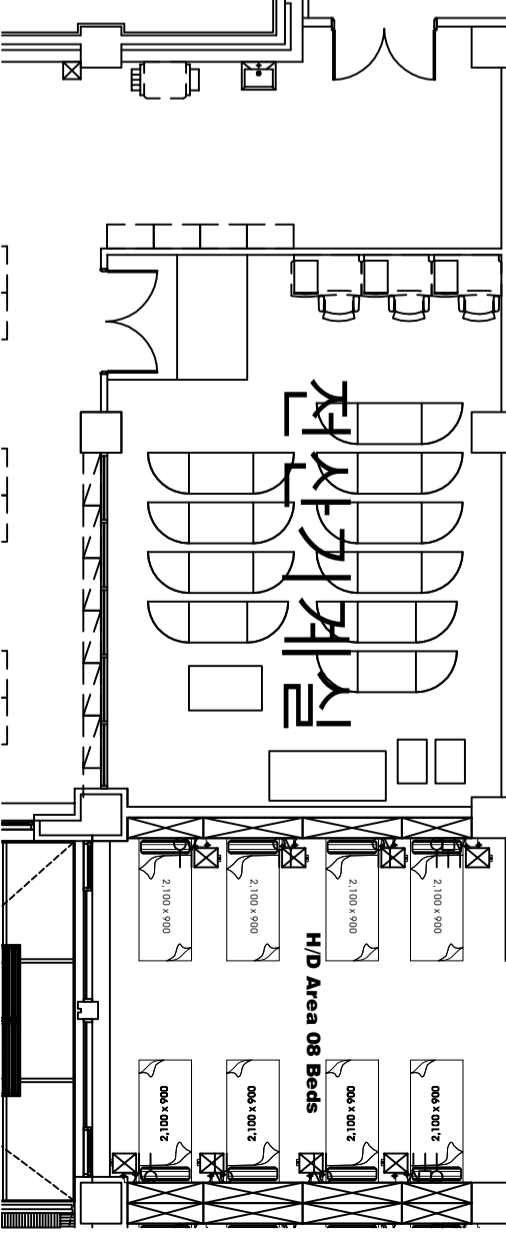
간호사실

화장실
상단실
하단실

Sub Station

전자키계열

H/D Area 08 Beds



공갓시#1